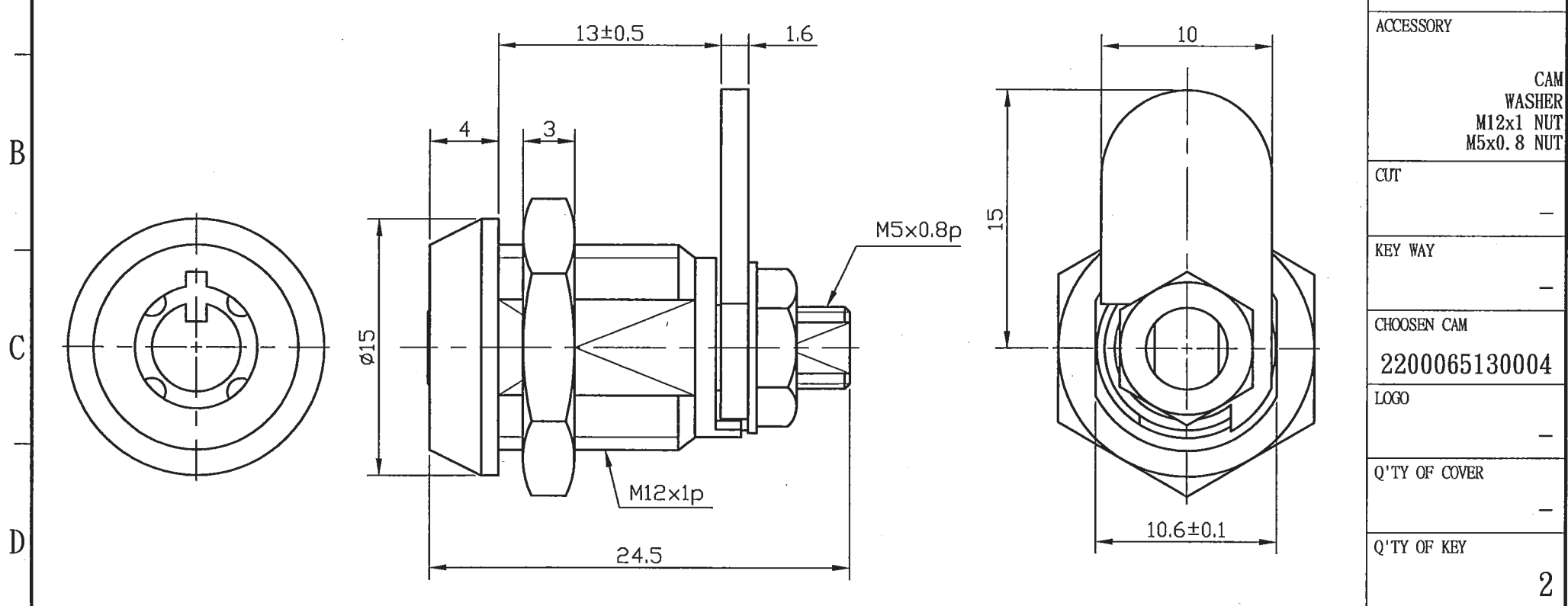
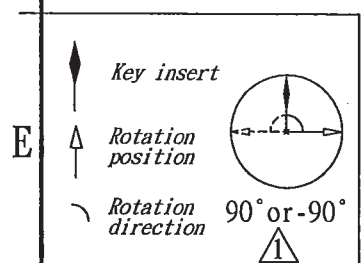


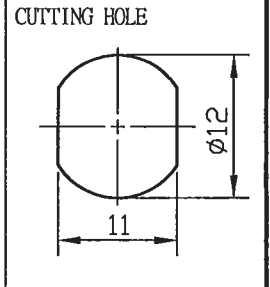
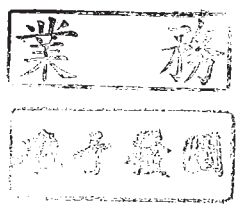
Rev.	Mark	Old dim.	New dim.					REMARK
C	△	±90°	90° or -90°					BARREL(ZINC)
	△	CHROME	Tin-Conalt					
Date	2012/03/22	2012/05/11						



ACCESSORY	CAM WASHER M12x1 NUT M5x0.8 NUT
CUT	-
KEY WAY	-
CHOSEN CAM	2200065130004
LOGO	-
Q'TY OF COVER	-
Q'TY OF KEY	2



PS: (1.) M12 Nut Rotation Breakdown Test : Max. 40 Kgf-cm ° (Suggest Torque Value : 20 Kgf-cm)  
 (2.) M5 Nut Rotation Breakdown Test : Max. 7 Kgf-cm ° (Suggest Torque Value : 5 Kgf-cm)  
 (3.) M5 End Of Barrel Shearing Test : Max. 40 Kgf °



OLD VERSION: 200BL1-2

DRAWER	DATE	SCALE	UNIT	MATERIAL	(LOCK BODY)	TITLE	CAM LOCK
Alvin	2012/05/11	3/1	mm	ZINC ALLOY			
APPROVER		HEAT TREATMENT		FINISH	(LOCK BODY)	DRAWING NO.	REV.
			N/A	Tin-Cobalt		10220014017	C