



Security Products

# Press Release



## FJM Security Products Improves Body Design of HitchSafe

Lynnwood, WA, August 4, 2011– FJM Security Products continues to make improvements to their HitchSafe Product with the latest revision being the most significant thus far for this very popular product.

The body of the HitchSafe, constructed of the same high impact aluminum alloy, is now extruded all the way to the front of the HitchSafe drawer. This adds even further strength and durability to the HitchSafe product.

The most recent revision of the HitchSafe will have a different body and drawer design not compatible with older versions of the HitchSafe. The bolts, flanges cover, etc. are all compatible.

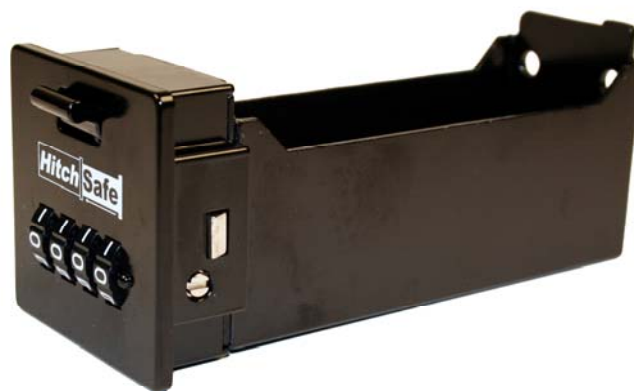
How to identify the new version of the HitchSafe:

1. The drawer itself is different with each corner having an angle notch out of it
2. Inside the Vault portion of the HitchSafe above the spring on the back wall will have the following version code AL-215-311

**2011**

If the year is less than 2011, then it is a prior version of the drawer that you will need.

3. Another easy way to tell is that the flange on the body will have 2 rivets on each side. See below image-



Security Products

**Hitch Safe**

Division of the Frank J Martin Company **Combi-Ratchet™ Combi-Cam**

*Innovators of competitively priced products providing creative solutions to consumers' security needs.*

**KeyGuard<sup>Pro</sup>**

**ShurLok**  
Key Storage Lock Box

[www.fjmsecurity.com](http://www.fjmsecurity.com)

**SOBO™**  
High Security Padlocks  
At Affordable Pricing!

**Combi**  
SECURE